

Dexik Conversion Server Overview

Dexik Conversion Server is a stand-alone component that is designed to convert multiple document formats to TIFF. This component can be easily integrated with Dexik Mail Capture, Dexik Remote Scan Solution and any Document Management System.

Dexik Conversion server is able to convert multiple formats, from image (BMP, JPEG, PNG, ICO, GIF, XPS, MDI) to Microsoft Office suite files, Adobe Acrobat PDF/FDF, HTML, MSG/EML (Outlook/Outlook Express) and XML.

The main features that make Dexik Conversion Server stand out from the competitors' solutions are:

- Dexik Conversion Server is able to convert PDF/FDF files with Adobe Acrobat Reader or Adobe Acrobat installed
- Dexik Conversion Server is able to convert MS Office documents via one of the following interfaces:
 - PeerNET TIFF Image Printer 7.0/8.0.
 - Microsoft Office Document Image Writer.
 - Microsoft Office XPS Conversion plug-in.
- Dexik Conversion Server allows configuring different conversion parameters (DPI, color, etc.) for different file types and different input folders.
- Dexik Conversion Server is storing all the configuration parameter within one file, making the configuration easily portable.
- Dexik Conversion Server has a very simple, intuitive interface.
- Dexik Conversion Server is able to process MODCA files.
- Dexik Conversion Server allows merging TIFF files after conversion is performed.
- Dexik Conversion Server utilizes the latest Microsoft technology (Microsoft .NET 3.5 SP1) to work with database for improved performance and error handling.
- Dexik Conversion Server conversion configuration allows skipping certain files that cannot be converted to TIFF, like AVI, WAV, MP3, etc.
- Dexik Conversion Server is able to integrate with **any** Document Management System.
- One server of Dexik Conversion Server is able to handle input folders simultaneously.
- Dexik Conversion Server natively supports 32-bit and 64-bit OS.
- Dexik Conversion Server licensing fee is 3-10 times lower than competitors'.

Dexik Conversion Server is a simple and robust solution for your document conversion needs. It is the best solution on the market at the low price, allowing your business to grow and improve without significant investment.

Dexik will guarantee the “functionality match” with any competitor – if there is a function that Dexik Conversion Server doesn't currently support, please let us know and we'll provide an updated version at no cost to you.

Chapter 1: Installing Dexik Conversion Server

This chapter introduces Dexik Conversion Server, lists system requirements, and provides installation instructions. The following topics are included in this section:

- [System Requirements](#)
- [Installing Dexik Conversion Server](#)

System Requirements

Dexik Conversion Server server-side requirements are as follows:

Dexik Mail Capture server-side requirements	
Component	Description
Operating system	Windows Server 2000/2003/2008 (x86 or x64) with .NET 3.5 SP1 installed.
Additional software	Microsoft Office 2003-2007 suite and Adobe Acrobat may be required.
RAM	At least 512 MB RAM, 4 GB recommended.
Available disk space	2 MB, excluding processed mail storage space.
Processor	Pentium III or higher.
Networking system	MS Network, Novell.
Protocols	One of the following: <ul style="list-style-type: none"> • TCP/IP • SPX/IPX • Named Pipes

The following database server requirements must be met:

Database server requirements	
OS	Database software
Windows, Novell, UNIX	ORACLE 8i or higher.
Windows	MS SQL Server 2000 or higher.

Configuring the Dexik Conversion Server

To access the Dexik Conversion Server configuration screen, select **Start > Programs (All Programs) > Dexik > Conversion Server > Conversion Server**. In the **Conversion Server** window, select **Server > Settings**. The Server Settings window appears:

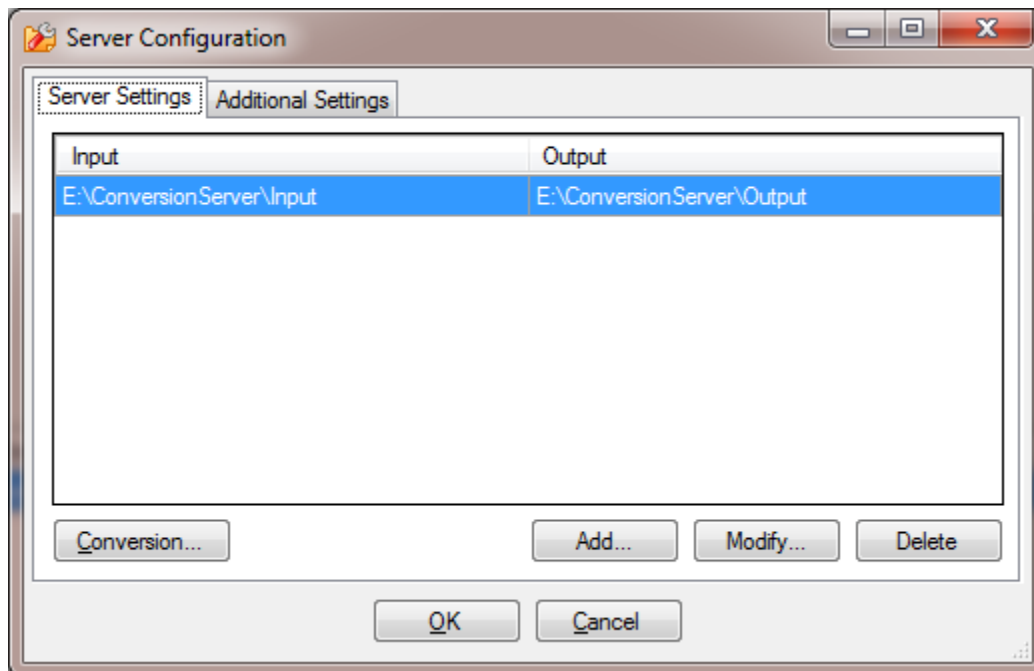


Figure 1. Dexik Conversion Server Configuration window

Configuring Input Directories

The **Server Settings** tab shows configured Conversion Server directories.

This window allows adding Conversion Server configurations. One Dexik Conversion Server can serve multiple Input Folders. Each Import Folder will have separate Conversion settings allowing customizing your conversion options per folder.

The **Additional Settings** tab shows configuration for PDF Forms.

Since Dexik Conversion Server is able to convert PDF Forms (FDF), it may be necessary to download and store the form files. Dexik Conversion Server will automatically download the file and store it in the specified folder, if the form doesn't exist in this folder yet.

Configuring Conversion Directory Settings

To configure the Dexik Conversion Server Input directory, select the location click **Add** or **Modify** button.

The **Dexik Conversion Server** input directory setup window will appear:

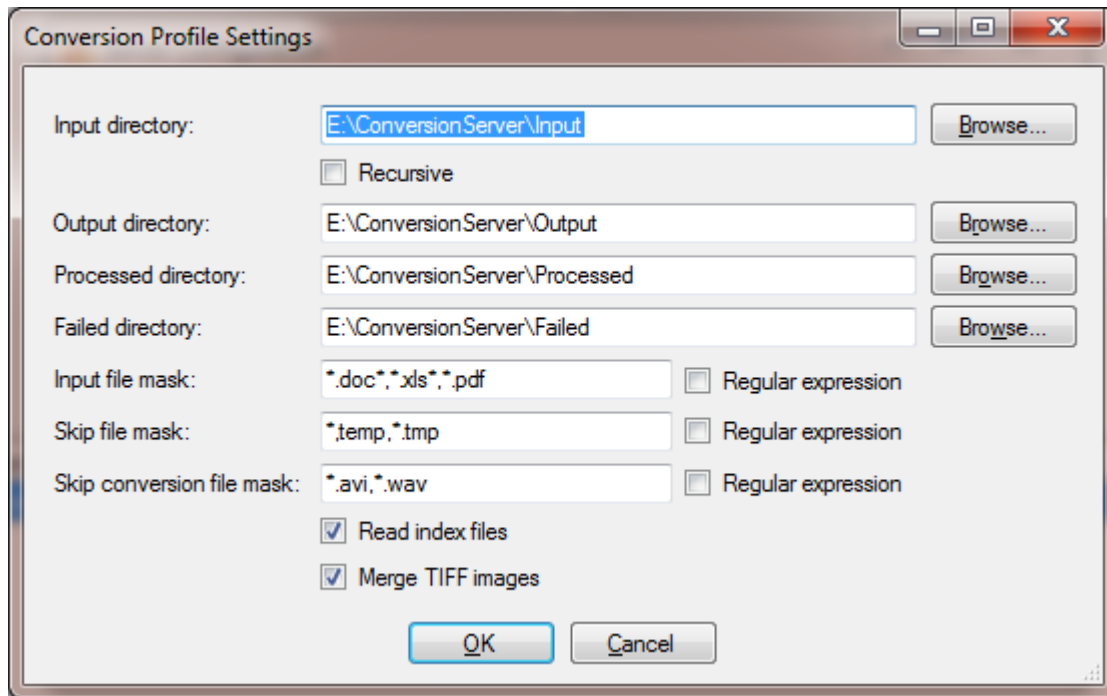


Figure 2. Dexik Import Server Directory Settings

This window allows configuring what files should be converted and how those files should be handled in case of successful processing and in case of an error.

If the files cannot be converted, those files are moved to **Failed** folder, making it easy to locate the files that caused issues.

If the option to Merge TIFF images is selected, the server will merge the resulting individual TIFF files into one.

The File Masks could be setup as Regular expressions for added flexibility.

Configuring Conversion Settings

Dexik Conversion Server allows using different conversion options for different file types that are configured in the **Dexik Conversion Server Conversion** settings window.

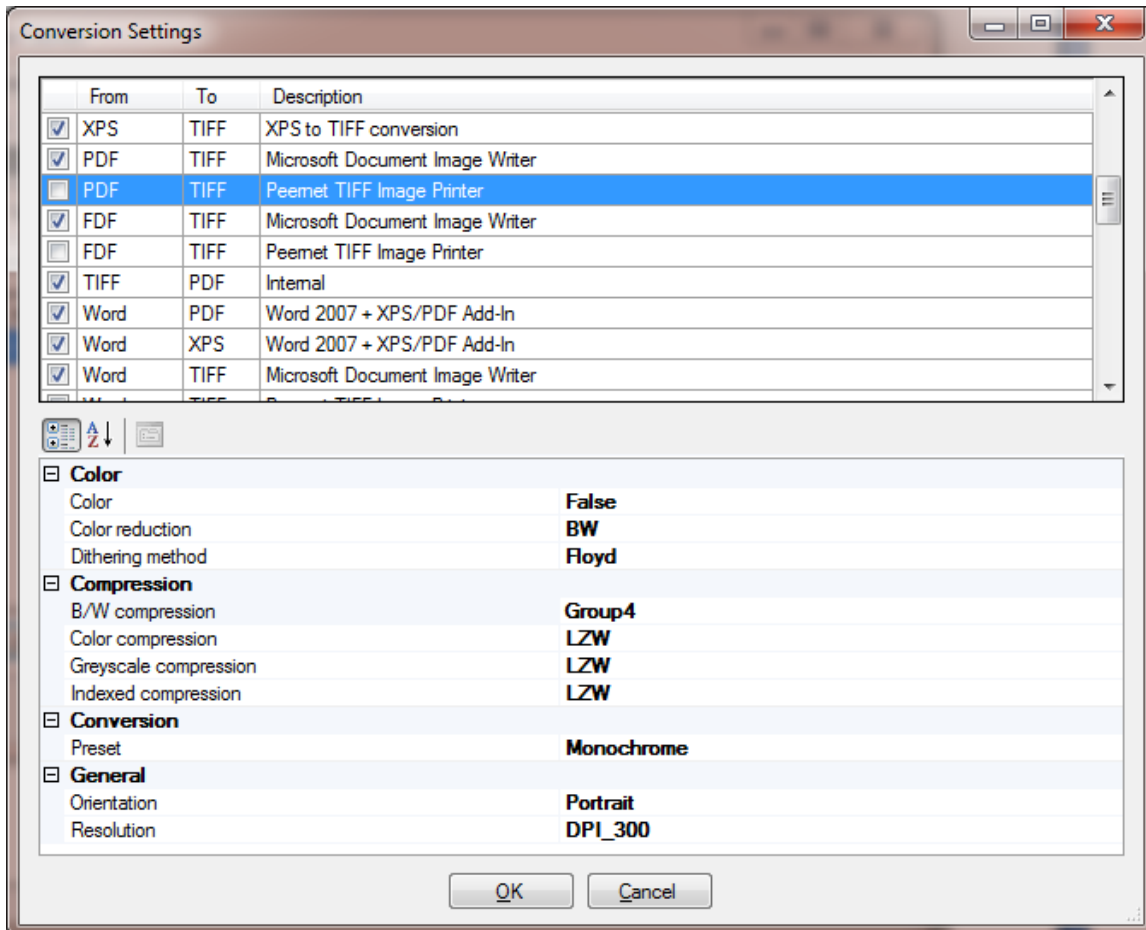


Figure 3. Dexik Import Server Conversion Settings




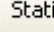

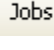
Conversion Server settings depend on the method selected as different conversion settings will natively support different configuration presets and options. Dexik Conversion Server has exceptional processing speed, due to ability to simultaneously print/process several files. When using the PeerNET TIFF Image Printer, Dexik Conversion Server can be configured to print to multiple printer threads as it's supported by PeerNET image driver.

Running the Dexik Conversion Server

To start Dexik Conversion Server, select **Start > Programs (All Programs) > Dexik > Conversion Server > Conversion Server**. The **Dexik Conversion Server** main window looks similar to other Dexik Servers interface.

The **Conversion Server** window consists of server toolbar and 3 additional windows: **Statistics Display** window, **Log Display** window and **Job Display** window. These windows can be shown/hidden using the corresponding toolbar buttons.

The **Dexik Conversion Server** window menu and button contain the following options:

Button	Menu Option	Shortcut Key	Description
	Server > Settings		Configuration for the Conversion Server Opens the Configuration window, which is used to configure database connection and processing options. For information, see Configuring the Dexik Conversion Server .
	Server > Start		Start Starts the processing for the configured nodes.
	Server > Stop		Stop Stops the processing for the configured nodes.
	Server > Refresh		Refresh Refreshes the configuration list.
	View > Statistics		Statistics Displays/hides the Dexik Import Server Statistics Window.
	View > Log		Log Displays/hides the Dexik Import Server Log Window.
	View > Jobs		Jobs Displays/hides the Dexik Import Server Jobs Window. Job shows configured and selected Import Server directories.
	View > Reset Window Layout		Reset Window Layout Restores default layout options for the Main Window.
	Service > Install Service		Install Service Installs the Dexik Conversion Server service.
	Service > Uninstall Service		Uninstall Service Uninstalls the Dexik Conversion Server service.
	File > Exit		Exit Exits the application.
	Help > About		About Shows copyright and release information regarding application.

The following table describes the Conversion Server window current session statistics:

Statistics	Description
Incoming	Displays the incoming file count.
Processed	Displays the processed file count.
Converted	Displays number of files successfully converted to TIFF.
Copied	Displays number of files that don't require conversion per selected configuration.
Failed	Displays the failed file count.

All statistics are captured for both capturing index files and regular files, residing in the Input folder.